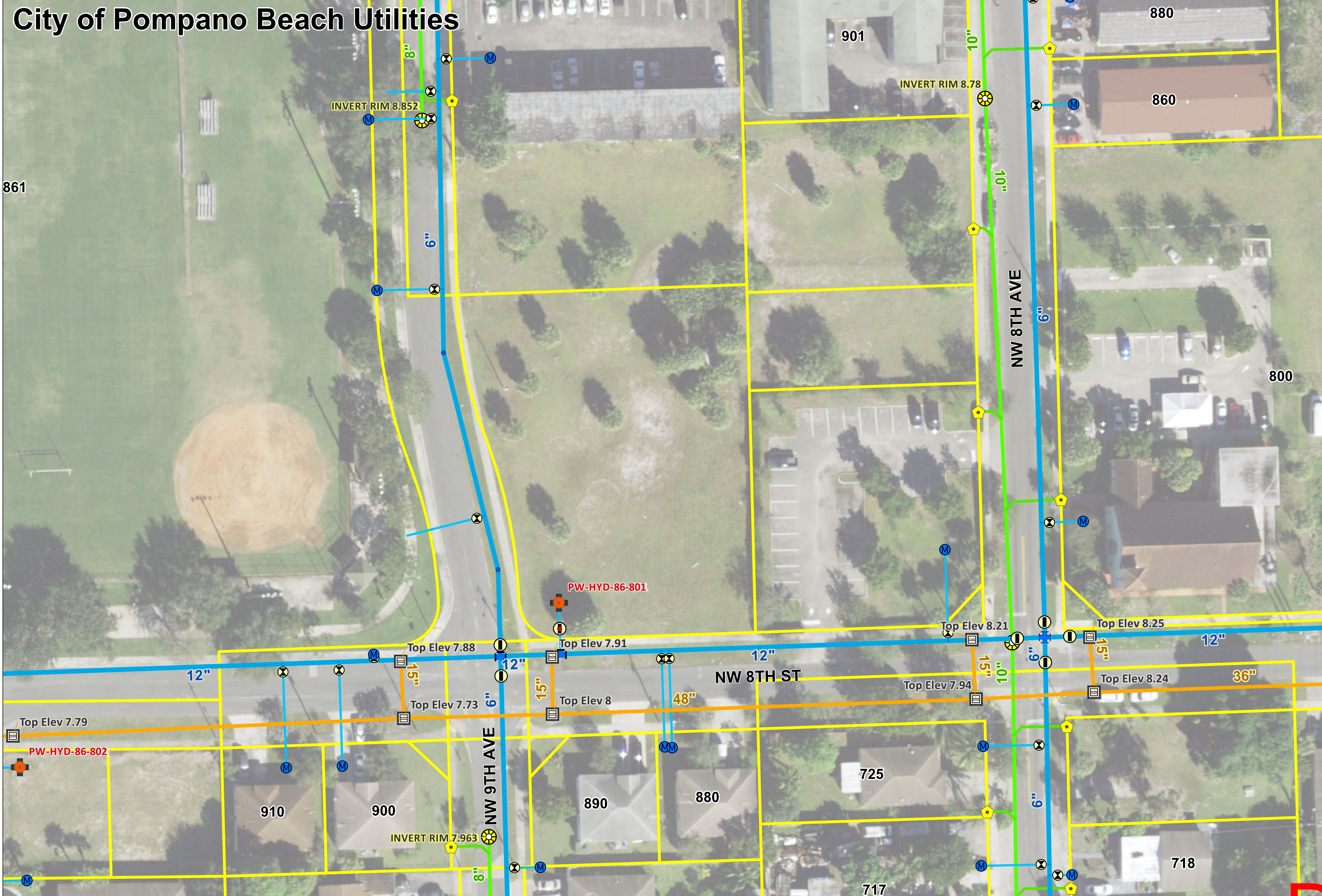


# City of Pompano Beach Utilities

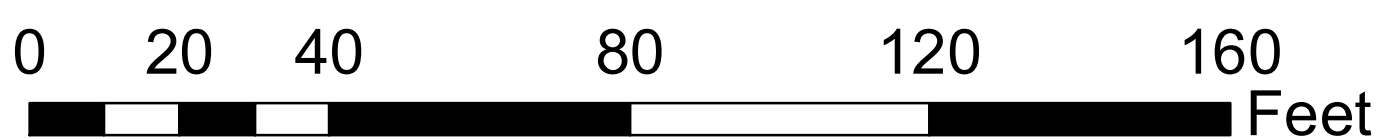


**Legend**

- Storm System Valves
- Storm Control\_Structure
- Storm Network Structures
- Storm Inlets
- Storm Discharge Points
- Storm Manholes
- Storm Culverts
- Storm Casings
- Storm Gravity Mains
- Owned By
  - Broward County
  - City of Pompano
  - FDOT
  - Fort Lauderdale
  - Private
- Sewer ARV
- Sewer Manholes
- Sewer System Valves
- Sewer Control Valves
- Lift Stations
- Owned By
  - Broward County
  - City of Pompano
  - Private
- Sewer Abandoned Line
- Sewer Clean Outs
- Sewer Lateral Lines
- Sewer Pressurized Mains
- Owned By
  - Broward County
  - City of Pompano
  - FDOT
  - Fort Lauderdale
  - Private
- Sewer Gravity Mains
- Owned By
  - Broward County
  - City of Pompano
  - FDOT
  - Ft Lauderdale
  - Private

This product has been compiled from various source data. However, this product is for reference only and is not to be construed as a legal document or survey instrument. Any reliance on the information contained herein is at the user's own risk. The City of Pompano Beach assumes no responsibility for any use of the information contained herein or any loss resulting there from.

820 NW 9 Avenue



**DRC**  
Pompano Beach  
PZ21-12000005  
7/7/2021  
Florida's Warmest Welcome